

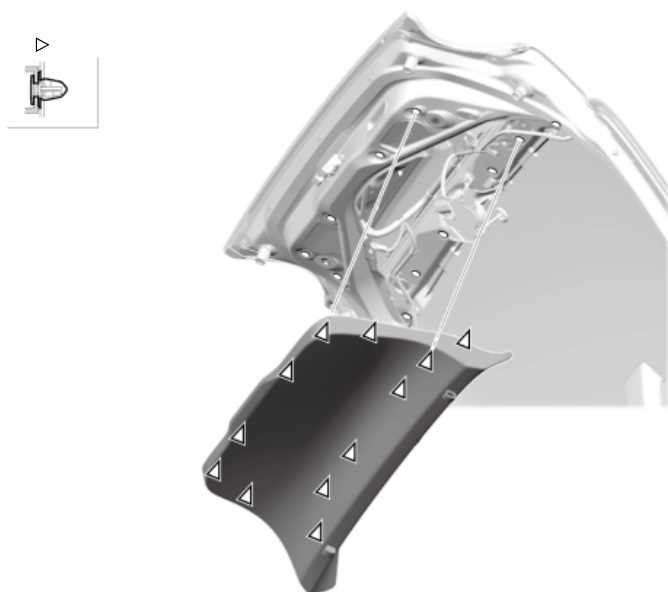
 : Torque, N·m (lbf·ft)
 X: Replace
 ⚠: Warning/Caution
 ●: Inspection/Adjustment
 ★: Learning
 ■: SPL Tool
 - - -: Required Removal

*1: Without center camera mirror system camera

*2: With center camera mirror system camera

*3: Part(s) are shown for one side only as the procedure is the same for both sides.

A. -



B. -

■ Key Information

Do the following before starting your work.

Remove:

- [Rear Window Wiper Arm](#)

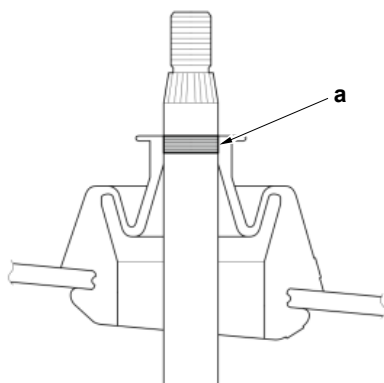
■ Sub-Procedure

• Installation

1. Refer to the figure.

Lubricant Specifications

Position	Type
a	Rubber Grease

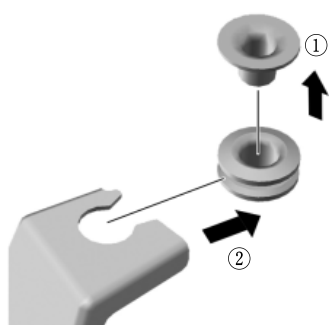


■ After Installation

- [Wiper Arm Adjustment](#)

C. -

■ Sub-Procedure



- **Removal**

- Refer to the figure.

D. -

- **After Installation**

- [Tailgate Adjustment](#)

E. -

- **Sub-Procedure**

- **Removal**

⚠ CAUTION

Open and close the tailgate after removing the tailgate support strut (a) while holding it by hand.

NOTICE

The tailgate support strut must be removed together with the ball stud (b).
(If the tailgate support strut is removed at the joint (c) with the ball stud, replace it with a new one.)

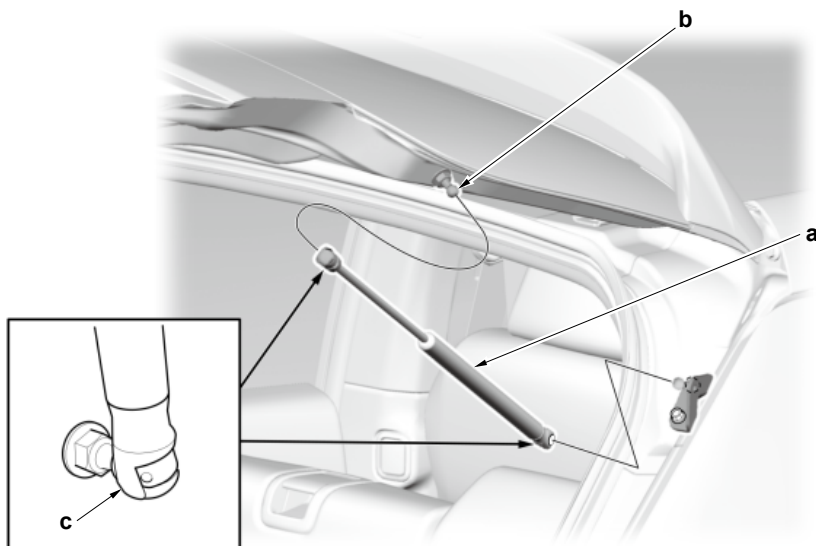
NOTE: Work while having other people hold it.

• Installation

- When installing a new one, attach the ball stud to the body and then push the tailgate support strut joint into the ball stud.

NOTICE

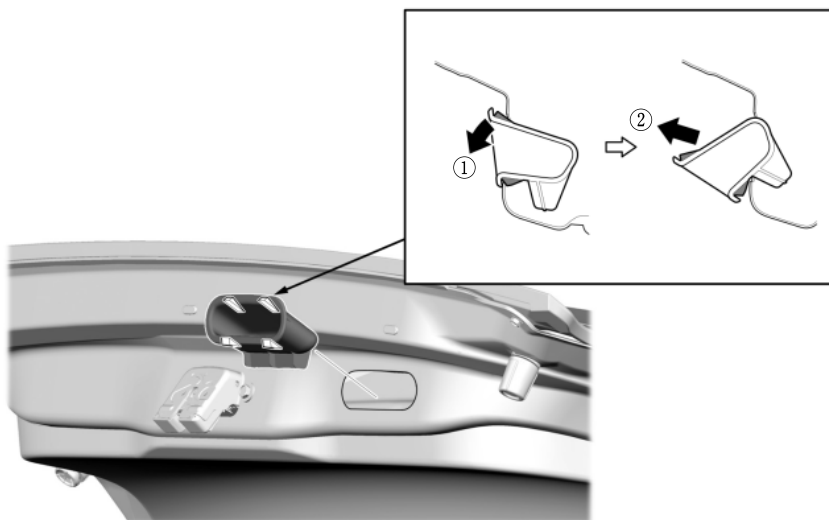
Make sure that the joint is securely set. Do not pull the joints strongly.



F. -

■ Sub-Procedure**• Removal**

- Refer to the figure.



G. -

■ Key Information

Do the following before starting your work.

Remove:

- [Rear Trim Panel](#)

■ After Installation

- [Tailgate Adjustment](#)

H. -

Figure 1 (Without center camera mirror system camera)

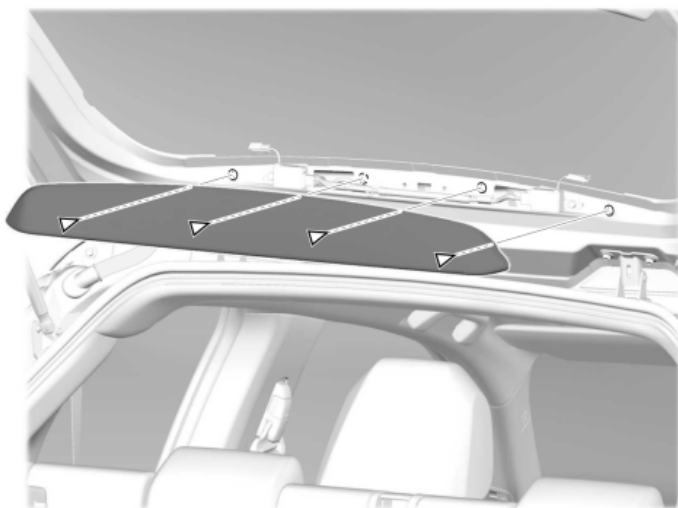
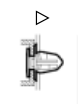
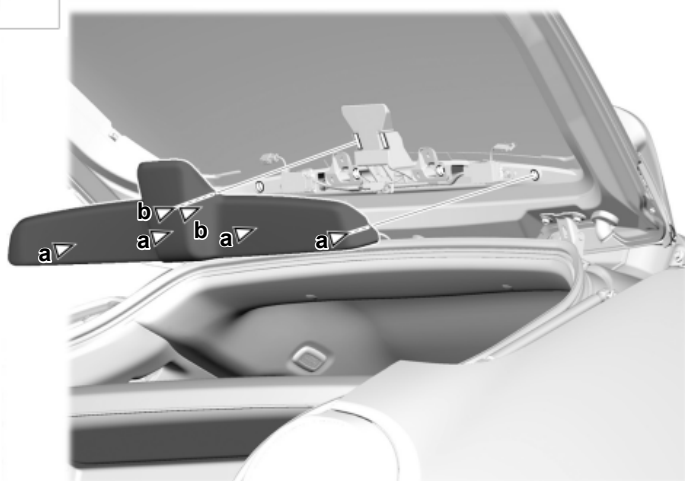
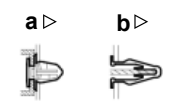
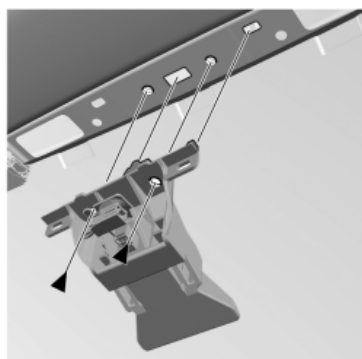


Figure 2 (With center camera mirror system camera)



I. -



J. -

■ Key Information

Do the following before starting your work.

Remove:

- [Headliner \(as needed\)](#)

■ After Installation

- [Tailgate Adjustment](#)